

38-56

PREPARED BY  
**KEITH AND SCHNARS, P.A.**  
ENGINEERS, PLANNERS, SURVEYORS  
115 N.E. 4TH AVENUE  
FORT LAUDERDALE, FLORIDA  
PHONE 378-2222

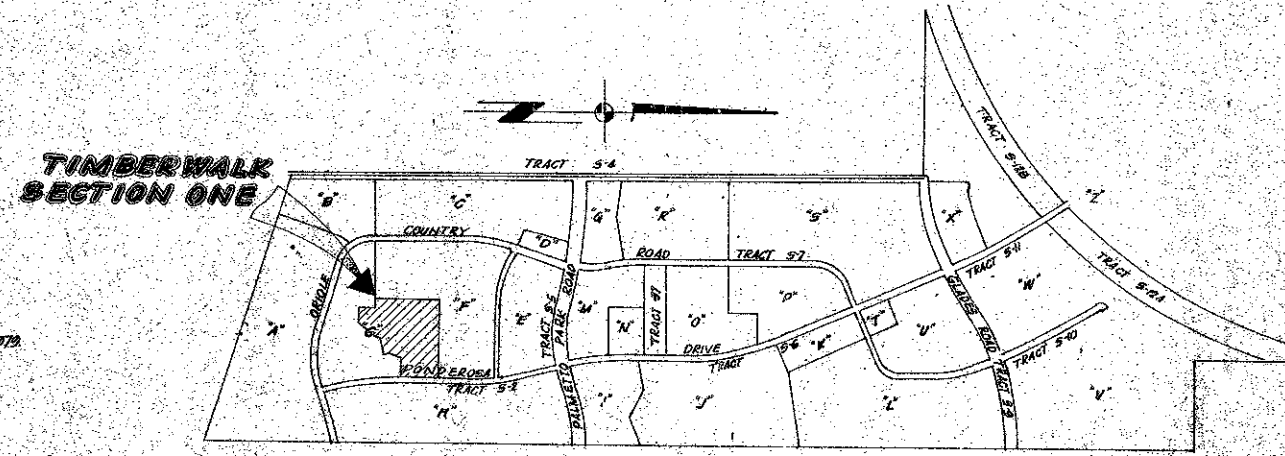
# TIMBERWALK SECTION ONE

A PORTION OF LOGGERS RUN A B.U.D.  
BEING A RESUBDIVISION OF A PORTION OF TRACT G  
BOUNDARY PLAT OF ORIOLE COUNTRY (P.B. 32, PGS. 175-180)  
SECTION 26, TOWNSHIP 47 SOUTH, RANGE 41 EAST  
PALM BEACH COUNTY, FLORIDA

STATE OF FLORIDA  
COUNTY OF PALM BEACH  
THIS PLAT WAS FILED FOR  
RECORD AT 10:11 A.M. THE  
27 DAY OF SEPTEMBER  
1978, AND WAS RECORDED  
IN PLAT BOOK 32 ON PAGES  
176 & 177  
JOHN B. DUNKLE  
CLERK OF CIRCUIT COURT  
Palm Beach, Florida

### OWNER'S ACKNOWLEDGMENT

STATE OF FLORIDA  
COUNTY OF BROWARD  
BEFORE ME PERSONALLY APPEARED R.D. LEVY AND A. NUÑEZ TO ME  
WELL KNOWN AND KNOWN TO ME TO BE THE INDIVIDUALS DESCRIBED  
IN AND WHO EXECUTED THE FOREGOING INSTRUMENT AS PRESIDENT  
AND ATTORNEY-IN-FACT OF THE ABOVE NAMED  
ORIOLE HOMES CORP., A FLORIDA CORPORATION, AND SEVERALLY ACKNOWLEDGED  
TO ME AND BEFORE ME THAT THEY EXECUTED SUCH INSTRUMENT AS SUCH  
PRESIDENT AND ASSISTANT SECRETARY, RESPECTIVELY, OF SAID CORP.  
AND THAT THE SEAL AFFIXED TO THE FOREGOING INSTRUMENT  
IS THE CORPORATE SEAL OF SAID CORPORATION AND THAT IT WAS  
AFFIXED TO SAID INSTRUMENT BY DUE AND REGULAR CORPORATE AUTHORITY,  
AND THAT SAID INSTRUMENT IS THE TRUE ACT AND DEED OF SAID  
CORPORATION.  
WITNESS MY HAND AND OFFICIAL SEAL THIS 20th DAY OF September A.D. 1978.



LOCATION SKETCH  
(NOT TO SCALE)

### DEDICATION

KNOW ALL MEN BY THESE PRESENTS THAT ORIOLE HOMES CORP., A FLORIDA CORPORATION, OWNER OF  
THE LAND HEREIN, BEING IN SECTION 26, TOWNSHIP 47 SOUTH, RANGE 41 EAST, PALM BEACH COUNTY,  
FLORIDA, HEREBY DEDICATES THE TIMBERWALK SECTION ONE, DESCRIBED AS FOLLOWS:

A PORTION OF TRACT "G", BOUNDARY PLAT OF ORIOLE COUNTRY, ACCORDING TO THE PLAT  
THEREOF, IS RECORDED IN PLAT BOOK 32, PAGES 175 THROUGH 180 OF THE PUBLIC RECORDS OF  
PALM BEACH COUNTY, FLORIDA, DESCRIBED AS FOLLOWS:

BEGINNING AT THE NORTHWEST CORNER OF SAID TRACT "G"; THENCE SOUTH 01°15'24" EAST,  
ALONG THE EAST BOUNDARY OF SAID TRACT "G" 680.48 FEET; THENCE SOUTH 88°44'26"  
WEST, 400.00 FEET; THENCE SOUTH 34°45'41" WEST, 255.29 FEET; THENCE SOUTH 80°45'28" EAST,  
200.00 FEET; THENCE SOUTH 89°41'27" WEST, 130.00 FEET; THENCE SOUTH 23°40'25" WEST,  
100.00 FEET; THENCE SOUTH 69°41'27" WEST, 129.77 FEET; THENCE WEST 175.00 FEET; THENCE  
NORTH 01°15'24" WEST, 129.77 FEET; THENCE SOUTH 88°40'47" WEST, 140.00 FEET TO A POINT  
ON A WYSEBERRY BOUNDARY OF SAID TRACT "G"; THENCE NORTH 01°15'24" WEST, ALONG SAID  
WYSEBERRY BOUNDARY, 946.66 FEET TO A POINT ON THE NORTH BOUNDARY OF SAID TRACT "G";  
THENCE NORTH 28°44'36" WEST, ALONG SAID NORTH BOUNDARY, 128.99 FEET TO THE POINT OF  
BEGINNING. SAID LANDS LYING IN PALM BEACH COUNTY, FLORIDA.

HE HAS CAUSED THE SAME TO BE SURVEYED AND PLATTED AS SHOWN HEREON AND DOES HEREBY  
DEDICATE AS FOLLOWS:

- 1. THE UTILITY AND DRAINAGE EASEMENTS, AS SHOWN HEREON, ARE HEREBY DEDICATED IN PERPETUITY  
FOR THE CONSTRUCTION, OPERATION AND MAINTENANCE OF UTILITIES AND DRAINAGE FACILITIES.
- 2. PARCELS 1, 2, 3, 4, 5, 6, 7, 8, 9, 10, 11, 12, 13, 14, 15, 16, 17, 18, 19, 20, 21, 22, 23, 24, 25, 26, 27, 28, 29, 30,  
31, 32, 33, 34, 35, 36, 37, 38, 39, 40, 41, 42, 43, 44, 45, 46, 47, 48, 49, 50, 51, 52, 53, 54, 55, 56, 57, 58, 59, 60,  
61, 62, 63, 64, 65, 66, 67, 68, 69, 70, 71, 72, 73, 74, 75, 76, 77, 78, 79, 80, 81, 82, 83, 84, 85, 86, 87, 88, 89, 90,  
91, 92, 93, 94, 95, 96, 97, 98, 99, 100, 101, 102, 103, 104, 105, 106, 107, 108, 109, 110, 111, 112, 113, 114, 115, 116, 117, 118, 119, 120,  
121, 122, 123, 124, 125, 126, 127, 128, 129, 130, 131, 132, 133, 134, 135, 136, 137, 138, 139, 140, 141, 142, 143, 144, 145, 146, 147, 148, 149, 150,  
151, 152, 153, 154, 155, 156, 157, 158, 159, 160, 161, 162, 163, 164, 165, 166, 167, 168, 169, 170, 171, 172, 173, 174, 175, 176, 177, 178, 179, 180,  
181, 182, 183, 184, 185, 186, 187, 188, 189, 190, 191, 192, 193, 194, 195, 196, 197, 198, 199, 200, 201, 202, 203, 204, 205, 206, 207, 208, 209, 210,  
211, 212, 213, 214, 215, 216, 217, 218, 219, 220, 221, 222, 223, 224, 225, 226, 227, 228, 229, 230, 231, 232, 233, 234, 235, 236, 237, 238, 239, 240,  
241, 242, 243, 244, 245, 246, 247, 248, 249, 250, 251, 252, 253, 254, 255, 256, 257, 258, 259, 260, 261, 262, 263, 264, 265, 266, 267, 268, 269, 270,  
271, 272, 273, 274, 275, 276, 277, 278, 279, 280, 281, 282, 283, 284, 285, 286, 287, 288, 289, 290, 291, 292, 293, 294, 295, 296, 297, 298, 299, 300,  
301, 302, 303, 304, 305, 306, 307, 308, 309, 310, 311, 312, 313, 314, 315, 316, 317, 318, 319, 320, 321, 322, 323, 324, 325, 326, 327, 328, 329, 330,  
331, 332, 333, 334, 335, 336, 337, 338, 339, 340, 341, 342, 343, 344, 345, 346, 347, 348, 349, 350, 351, 352, 353, 354, 355, 356, 357, 358, 359, 360,  
361, 362, 363, 364, 365, 366, 367, 368, 369, 370, 371, 372, 373, 374, 375, 376, 377, 378, 379, 380, 381, 382, 383, 384, 385, 386, 387, 388, 389, 390,  
391, 392, 393, 394, 395, 396, 397, 398, 399, 400, 401, 402, 403, 404, 405, 406, 407, 408, 409, 410, 411, 412, 413, 414, 415, 416, 417, 418, 419, 420,  
421, 422, 423, 424, 425, 426, 427, 428, 429, 430, 431, 432, 433, 434, 435, 436, 437, 438, 439, 440, 441, 442, 443, 444, 445, 446, 447, 448, 449, 450,  
451, 452, 453, 454, 455, 456, 457, 458, 459, 460, 461, 462, 463, 464, 465, 466, 467, 468, 469, 470, 471, 472, 473, 474, 475, 476, 477, 478, 479, 480,  
481, 482, 483, 484, 485, 486, 487, 488, 489, 490, 491, 492, 493, 494, 495, 496, 497, 498, 499, 500, 501, 502, 503, 504, 505, 506, 507, 508, 509, 510,  
511, 512, 513, 514, 515, 516, 517, 518, 519, 520, 521, 522, 523, 524, 525, 526, 527, 528, 529, 530, 531, 532, 533, 534, 535, 536, 537, 538, 539, 540,  
541, 542, 543, 544, 545, 546, 547, 548, 549, 550, 551, 552, 553, 554, 555, 556, 557, 558, 559, 560, 561, 562, 563, 564, 565, 566, 567, 568, 569, 570,  
571, 572, 573, 574, 575, 576, 577, 578, 579, 580, 581, 582, 583, 584, 585, 586, 587, 588, 589, 590, 591, 592, 593, 594, 595, 596, 597, 598, 599, 600,  
601, 602, 603, 604, 605, 606, 607, 608, 609, 610, 611, 612, 613, 614, 615, 616, 617, 618, 619, 620, 621, 622, 623, 624, 625, 626, 627, 628, 629, 630,  
631, 632, 633, 634, 635, 636, 637, 638, 639, 640, 641, 642, 643, 644, 645, 646, 647, 648, 649, 650, 651, 652, 653, 654, 655, 656, 657, 658, 659, 660,  
661, 662, 663, 664, 665, 666, 667, 668, 669, 670, 671, 672, 673, 674, 675, 676, 677, 678, 679, 680, 681, 682, 683, 684, 685, 686, 687, 688, 689, 690,  
691, 692, 693, 694, 695, 696, 697, 698, 699, 700, 701, 702, 703, 704, 705, 706, 707, 708, 709, 710, 711, 712, 713, 714, 715, 716, 717, 718, 719, 720,  
721, 722, 723, 724, 725, 726, 727, 728, 729, 730, 731, 732, 733, 734, 735, 736, 737, 738, 739, 740, 741, 742, 743, 744, 745, 746, 747, 748, 749, 750,  
751, 752, 753, 754, 755, 756, 757, 758, 759, 760, 761, 762, 763, 764, 765, 766, 767, 768, 769, 770, 771, 772, 773, 774, 775, 776, 777, 778, 779, 780,  
781, 782, 783, 784, 785, 786, 787, 788, 789, 790, 791, 792, 793, 794, 795, 796, 797, 798, 799, 800, 801, 802, 803, 804, 805, 806, 807, 808, 809, 810,  
811, 812, 813, 814, 815, 816, 817, 818, 819, 820, 821, 822, 823, 824, 825, 826, 827, 828, 829, 830, 831, 832, 833, 834, 835, 836, 837, 838, 839, 840,  
841, 842, 843, 844, 845, 846, 847, 848, 849, 850, 851, 852, 853, 854, 855, 856, 857, 858, 859, 860, 861, 862, 863, 864, 865, 866, 867, 868, 869, 870,  
871, 872, 873, 874, 875, 876, 877, 878, 879, 880, 881, 882, 883, 884, 885, 886, 887, 888, 889, 890, 891, 892, 893, 894, 895, 896, 897, 898, 899, 900,  
901, 902, 903, 904, 905, 906, 907, 908, 909, 910, 911, 912, 913, 914, 915, 916, 917, 918, 919, 920, 921, 922, 923, 924, 925, 926, 927, 928, 929, 930,  
931, 932, 933, 934, 935, 936, 937, 938, 939, 940, 941, 942, 943, 944, 945, 946, 947, 948, 949, 950, 951, 952, 953, 954, 955, 956, 957, 958, 959, 960,  
961, 962, 963, 964, 965, 966, 967, 968, 969, 970, 971, 972, 973, 974, 975, 976, 977, 978, 979, 980, 981, 982, 983, 984, 985, 986, 987, 988, 989, 990,  
991, 992, 993, 994, 995, 996, 997, 998, 999, 1000.

**DEDICATION (CONTINUED)**  
AMENITIES AS LOGGERS RUN, INC. SHALL FROM TIME TO TIME DETERMINE, SUCH AS PERMANENT AND TEMPORARY SIGNS, DECORATIVE  
WALLS, FENCES AND OTHER STRUCTURES IN KEEPING WITH THE USE OF SUCH PARCELS AS SUCH A SIGN AND ENTRY FEATURE, SAID  
PARCELS BEING THE PERPETUAL MAINTENANCE OBLIGATION OF THE SAID LOGGERS RUN, INC.  
10. PARCEL D-1, AS SHOWN HEREON, AND PARCELS P-1, P-2, P-3, P-4, P-5, P-6, AND P-7, AS SHOWN HEREON, ARE SUBJECT TO EASEMENTS  
WHICH ARE HEREBY GRANTED AND IMPOSED THEREON IN FAVOR OF PALM BEACH COUNTY, TIMBERWALK ASSOCIATION, INC. AND  
LOGGERS RUN, INC. AND THE DESIGNERS OF TIMBERWALK ASSOCIATION, INC. FOR THE CONSTRUCTION,  
OPERATION, AND MAINTENANCE OF UNDERGROUND UTILITY AND DRAINAGE FACILITIES.

IN WITNESS WHEREOF THE SAID CORPORATION HAS CAUSED THESE PRESENTS TO BE SIGNED BY ITS  
PRESIDENT AND ATTESTED BY ITS ASSISTANT SECRETARY AND ITS CORPORATE SEAL TO BE AFFIXED  
HERE TO BY AND WITH AUTHORITY OF ITS BOARD OF DIRECTORS THIS 20th DAY OF September A.D. 1978.

### TITLE CERTIFICATION

STATE OF FLORIDA  
COUNTY OF BROWARD  
I, John B. Dunkle, TITLE INSURANCE COMPANY, FULLY LICENSED IN THE  
STATE OF FLORIDA, DO HEREBY CERTIFY THAT WE HAVE EXAMINED THE TITLE TO THE HEREON  
DESCRIBED PROPERTY, THAT WE FIND THE TITLE TO THE PROPERTY IS HELD IN ORIOLE HOMES CORP.  
AND THAT THE CURRENT TAXES HAVE BEEN PAID, THAT THE PROPERTY IS NOT ENCUMBERED BY MORTGAGES.

DATE: Aug 30, 1978  
John B. Dunkle, Vice Pres.  
OFFICER OF TITLE INSURANCE COMPANY  
LICENSED IN FLORIDA

### SURVEYOR'S CERTIFICATE

THIS IS TO CERTIFY THAT TO THE BEST OF OUR KNOWLEDGE AND BELIEF, THE PLAT SHOWN  
HEREON IS A TRUE AND CORRECT REPRESENTATION OF THE LANDS SURVEYED, THAT  
PERMANENT REFERENCE MONUMENTS (PERM'S) HAVE BEEN SET AS INDICATED HEREON,  
THAT PERMANENT CONTROL POINTS (P.C.P.'S) WILL BE SET AS REQUIRED BY LAW, AND THAT  
THE SURVEY WAS MADE UNDER OUR RESPONSIBLE DIRECTION AND SUPERVISION AND THAT THE SURVEY  
DATA COMPLIES WITH ALL THE REQUIREMENTS OF CHAPTER 111, FLORIDA STATUTES, AND ORDINANCES  
OF PALM BEACH COUNTY, FLORIDA.

DATE: Oct 1, 1978  
Keith and Schnars, P.A.  
ENGINEERS, PLANNERS, SURVEYORS

BY: Thomas F. Schnars  
THOMAS F. SCHNARS  
PROFESSIONAL LAND SURVEYOR  
FLORIDA REGISTRATION NO. 2925

### APPROVAL PALM BEACH COUNTY, FLORIDA

BOARD OF COUNTY COMMISSIONERS  
THIS PLAT IS HEREBY APPROVED FOR RECORD THIS 25 DAY OF September A.D. 1978

BY: Bill Baker  
CHAIRMAN, BILL BAKER

COUNTY ENGINEER  
THIS PLAT IS HEREBY APPROVED FOR RECORD THIS 25 DAY OF Sept A.D. 1978

BY: John B. Dunkle  
COUNTY ENGINEER

ATTEST: JOHN B. DUNKLE, CLERK  
BOARD OF COUNTY COMMISSIONERS

BY: John B. Dunkle  
DEPUTY CLERK